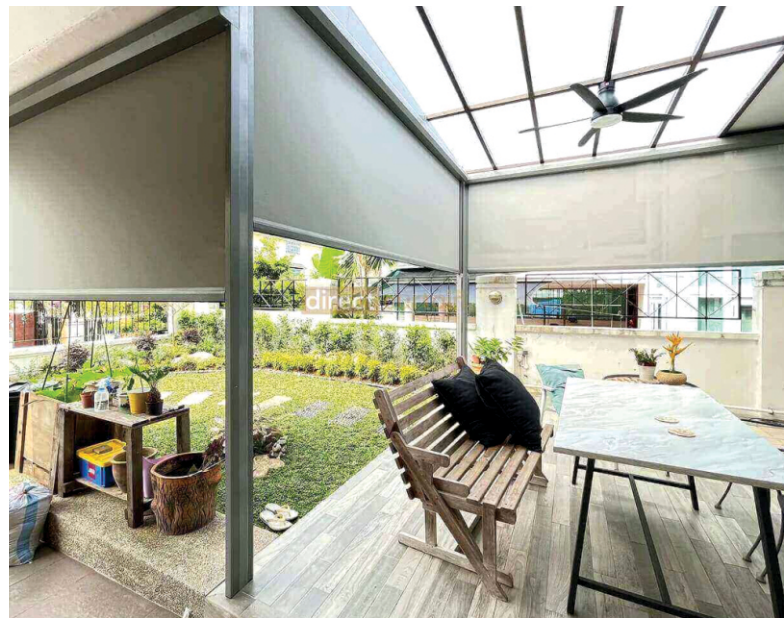


Zip Blinds



Introduction

Zip blinds are a unique type of outdoor blind that provide superior protection against wind, rain, and sun which results in protecting indoor furnishings, and improving energy efficiency. They have high wind resistance and efficient functioning, adding comfort and convenience to the space. They offer sleek modern design, easy operation, minimal maintenance, and long-lasting durability. Zip blinds are popular for balconies and patios, seamlessly connecting indoor and outdoor spaces, whether it is a residential or commercial space.



They are made with high-quality materials and designed to be durable, long-lasting, and easy to use. Protected by the elements all year-round and with a sense of seclusion and sanctuary, you'll spend more time enjoying life outdoors.

Benefits:

- Superior protection in every season against UV rays, dust, water and wind, using high-quality materials for durability and ease of use.
- Offering benefits such as rain blockage, cool air retention, privacy, pest prevention, easy maintenance, and appealing aesthetics.
- Flexibility for creating an extra space like balconies, outdoor areas, dining area for cafés and restaurants.
- Control options of manual and motorised.
- There is no rattling in windy conditions due to the robust design and hardware system.
- Reduce energy bills

Operating Systems:

Zip blinds offer flexibility of being operated either manually or through a motorized system.

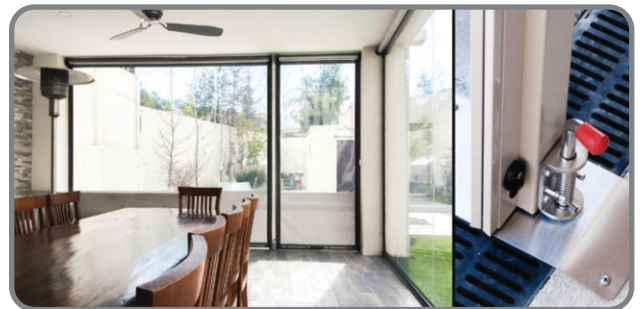
Manual Operation

- Effortless and easy to use, due to spring balanced technology.
- There are no zips, cords, ropes or wires.
- Lock the blind at the lowest position with help of Center-Lock Release mechanism and unlock by lifting the handle to activate the release latches.
- The blinds can be freezed at any position as required.
- Zip blinds can be operated from both sides.

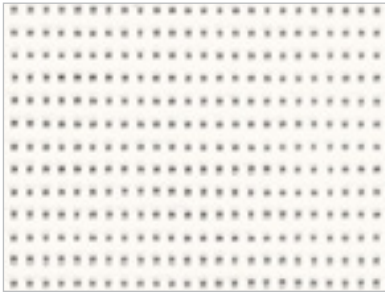


Motorised Operation

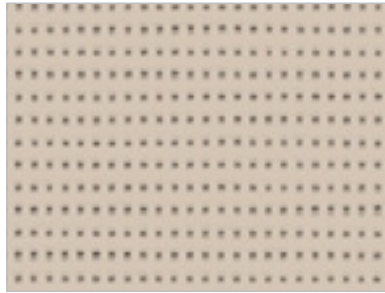
- Zip blind has motorized operation for hard to reach locations.
- It provides easy, secure, and safe movement.
- Two motor rating for operation according to application - 20 Nm and 40 Nm ratings
- Use "Removable Post" to divide blinds wider than 6 metres. This can be used for creating a door way. Removable post can be removed easily for the uninterrupted view.



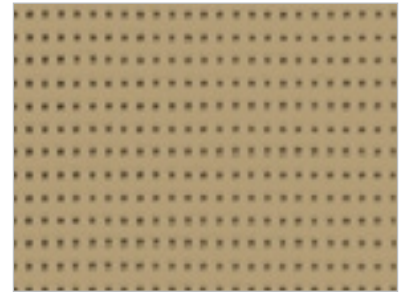
Soltis 86 (177cm - 267cm)



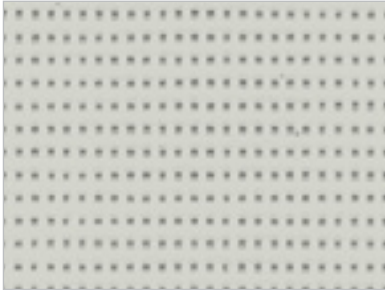
White 86 - 2044



Sandy Beige 86 - 2135



Pepper 86 - 2012

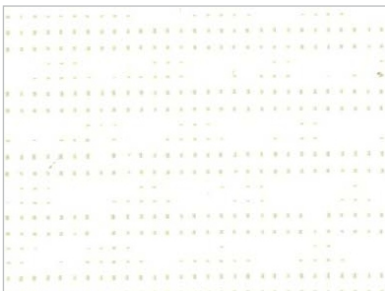


Boulder 86 - 2171

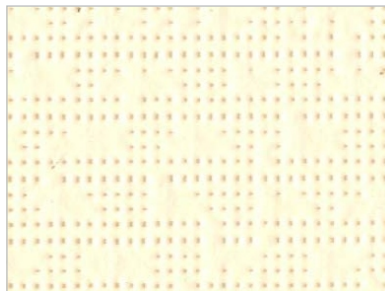


Concrete 86 - 2167

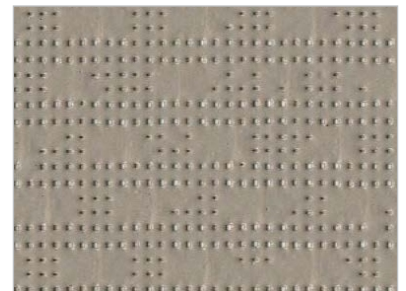
Soltis 96 (120cm - 267cm)



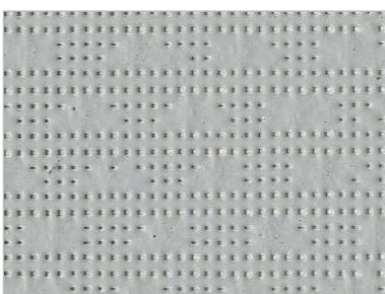
White 96 - 8102



Off White 96 - 1103



Taupe 96 - 50850



Boulder 96 - 2171

Clear PVC



Mounting Profiles

According to the applications, best suited profiles can be selected



Bracket

This holds the blind in place but leaves it unprotected from the elements



Bracket with back flashing

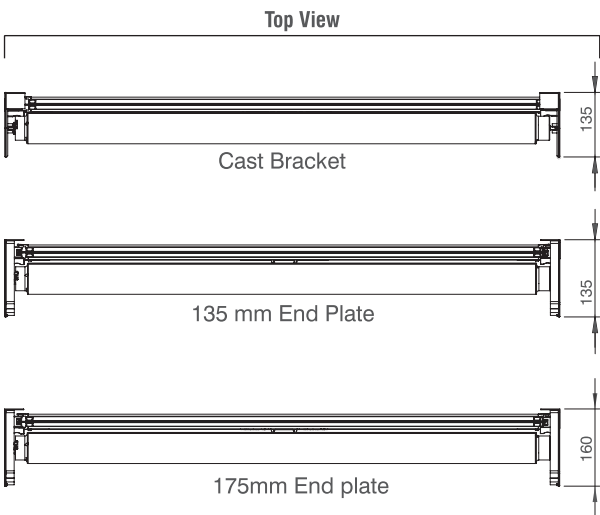
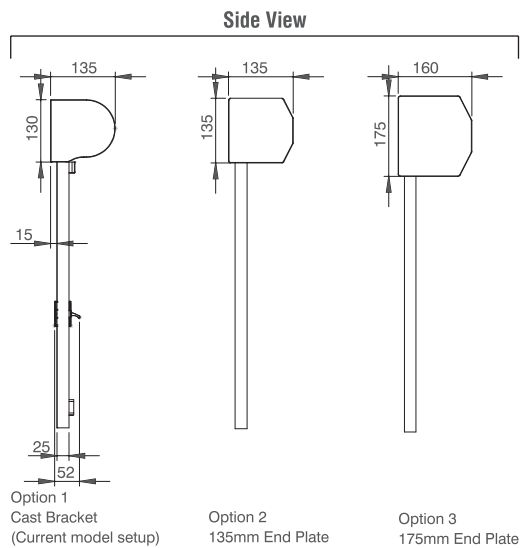
It hides the blind from view on one side



Pelmet

Conceals the blind when retracted

Dimensional Details



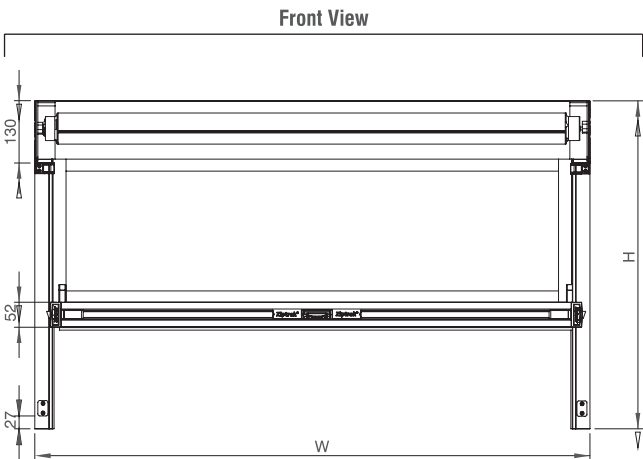
Profile Colors







Black - RAL 9005



Dark Grey - RAL 7026



Fabric Specifications

Technical Properties	Soltis 86	Soltis 96
Openness factor	14%	4%
Weight (STD. EN ISO 2286-2)	380 g/m ² - 11.2 oz/sqyd	400 g/m ² - 11.8 oz/sqyd
Thickness	0.45 mm - 450 microns	0.45 mm - 450 microns
Width	177 cm - 267 cm - 69.7 in. - 105.1 in.	120 cm - 267 cm - 47.2 in. - 105.1 in.
Standard format length	50lm - 54.68 yds (177cm) 40lm - 43.74 yds (267cm)	40lm - 43.74 yds Length of rolls
Tensile Strength (warp/weft)	230/160 daN/5cm (EN ISO 1421)	220/220 daN/5cm (EN ISO 1421)
Tear Strength (warp/weft)	45/20 daN (DIN 53.363)	30/25 daN (DIN 53.363)
Rating (Flame Retardancy)	B1/DIN 4102-1-BS 7837-BS 5867-Schwerbrennbar-Q1-Tr1/ONORM A 3800-1 Classe 1/UNI 9177-87-M1/UNE 23.727-90-VKF 5.2/SN 198898-1530.3 /AS/NZS G1/GOST 30244-94-Method 1/NFPA 701-CSFMT19-Class A/ASTM E84	M2 (NFP 92 - 507)
Quality Mgt Systems	ISO 9001	ISO 9001
Euroclass (EN 13501-1)	B-s ₂ ,d ₀	
<div> <div>Certifications, Lables, Warranties & Recycling</div> <div>     </div> </div>		

Clear PVC Specifications

Thickness	0.75mm	
Weight	0.95kg/m ²	
Strength (kg/cm)	18.7	
Before Conditioning:		
Haze Value (%)	2.2%	Light Transmission (%) 85.6%
After Soaking:		
Haze Value (%)	5.0%	Light Transmission (%) 83.1%
After Rubbing:		
Haze Value (%)	2.6%	Light Transmission (%) 85.6%
Tear Resistance:	0.75m	
	Length Wise	Width Wise
Mean	48.2m	31.3m
Maximum	60.7m	34.1m
Minimum	37.6m	28.1m

Temperature (°C)	Contraction in length (%) along with roll	Expansion in length (%) along with roll
400	0.0%	0.5%
600	-1.5%	0.5%
800	-1.5%	1.0%
1000	-2.0%	1.5%
1200	-3.0%	2.0%
1400	-3.5%	2.0%

Motor Specifications

Particulars	Remote		Switch	
Nominal voltage	230 V AC		230 V	
Frequency	50 Hz		50 Hz	
Thermal time	4 minutes		4 minutes	
Wire section	0.75 mm ²		0.75 mm ²	
System of protection	IP 44		IP 44	
Temperature working range	Normal use: -10°C to +40°C Exceptional use (20% of the lifetime not simultaneous): -20°C to +70°C		Normal use: -10°C to +40°C Exceptional use (20% of the lifetime not simultaneous): -25°C to +70°C	
Radio frequency	433.42 MHZ			
Safety Security	EN 60335-2-97			
Electromagnetic compatibility	EN 301489-3			
Radio	EN 300-220-3			
Power supply tolerances	207-253 V AC		207-244V	
Number of wires of the cable	3		4	
Nominal Torque(Nm)	20	40	20	40
Nominal Speed(rpm)	17	17	17	17
Rated Power (W)	160	270	160	270
Rated Current (A)	0.75	1.2	0.75	1,2
Noise(dBA)	53	57	53	57

Size Limitation

Manual Operation	Minimum	Maximum
Width (mm)	625	5100
Drop (mm)	500	3500

Motorised Operation	Minimum	Maximum
Width (mm)	1000	6000
Drop (mm)	1000	3500

- Upto 4300 mm width - 135mm pelmet
- Above 4300mm width - 175mm pelmet

© 2019 Hunter Douglas. All rights reserved. All trademarks used herein are the property of Hunter Douglas or their respective owners. 07/2023

For more information call **1800 121 1919** or
write to **sales@hunterdouglas.in**

www.hunterdouglas.in | follow us on

